



Metal Decking Good Practice Guide

MDG02- System Edge Protection Installation

Construction (Design and Management) Regulation 2015 (CDM)

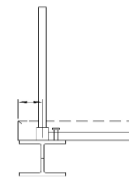
A contractor has a key role to play in co-operating with other contractors where the work could affect the health and safety of your workers and others, to ensure that the risks are properly managed and controlled contractors need to co-operate with others. **All contractors** have a part to play in ensuring that the site is a safe place to work. The key to this is proper co-ordination of the work, underpinned by good communication and cooperation between all those involved.

To help comply with the duties given in CDM it may often be appropriate to install edge protection that adequately protects associated trades such as the metal decking installers and concrete pourers.

Edge Protection on Centre of the Beam **X**



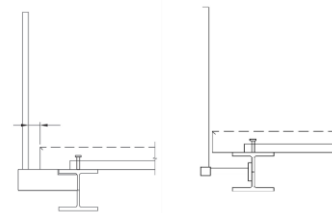
Edge protection on the centre of the beam does not allow access to fix the edge trim outside of the beam centre, or the shear studs to the top of the beam.



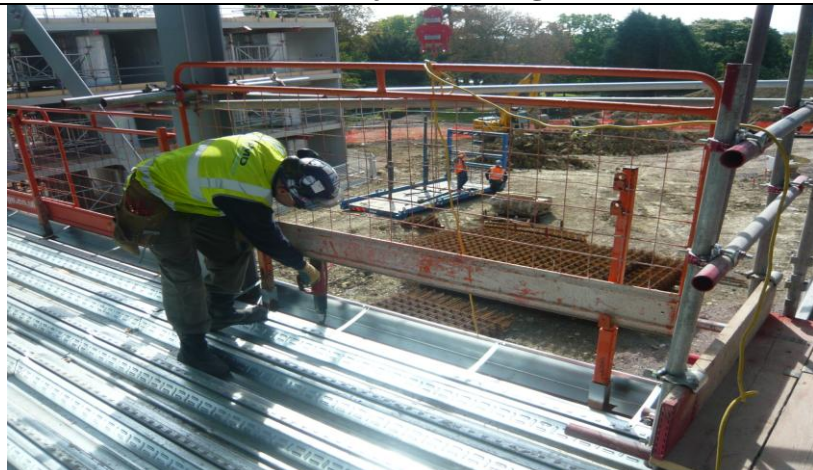
Cantilevered Edge Protection **✓**



Edge protection installed cantilevered from the beam allows good access for fixing deck edge trim and the shear studs to the top of the beam.



Adjustable Edge Protection on Centre of the Beam **✓**



Adjustable edge protection on the centre of the beam with a 460mm gap does allow access to fix the edge trim outside of the beam centre and the shear studs to the top of the beam.

