

Buildings Section

Terminal 1, Heathrow Airport, London
for the British Airports Authority

Architects
Frederick Gibberd & Partners

Structural Engineers
Sir William Halcrow and Partners

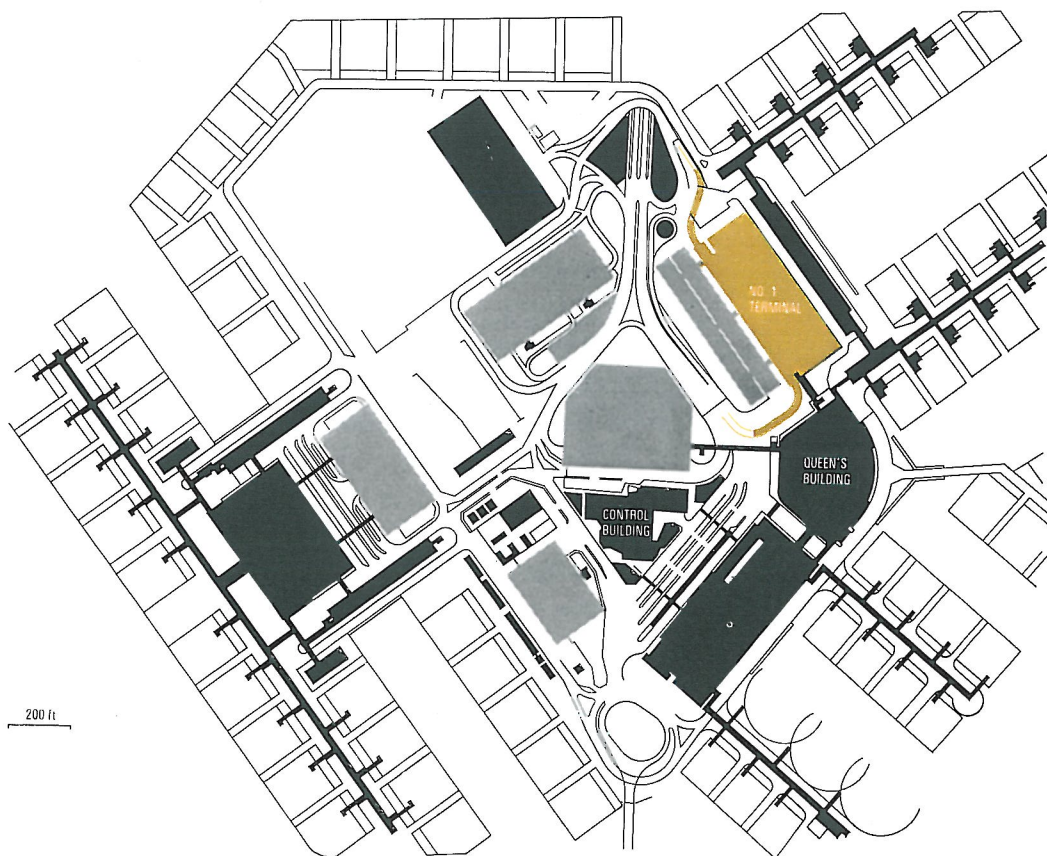
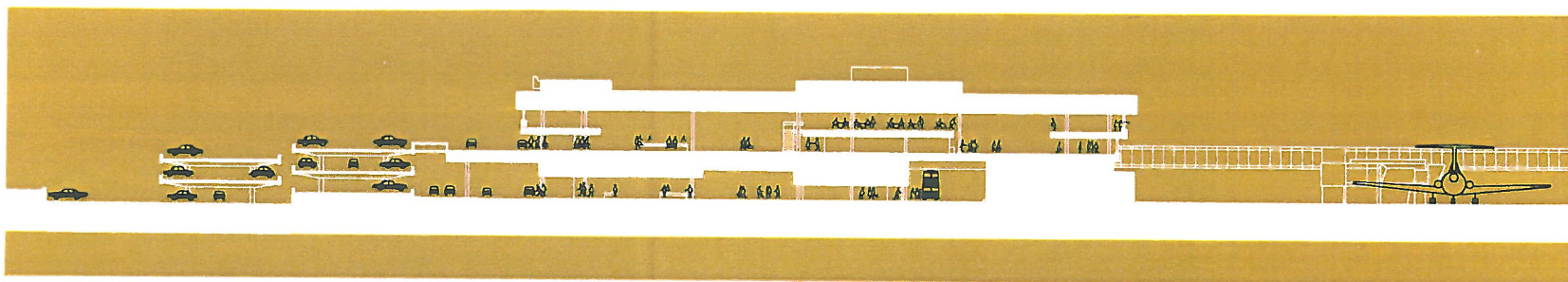
Steelwork Contractor
Redpath Dorman Long Ltd

Main Contractor
Tersons Ltd

Judges comments

The multitudinous and complex functions of the building have required very careful planning and steelwork was chosen both for its speed of erection and its flexibility. The deep steel trusses between the two passenger floors make the passage of services, including a complex system of luggage conveyors, comparatively simple. The steelwork is uncased and the free standing columns give full expression to the material.

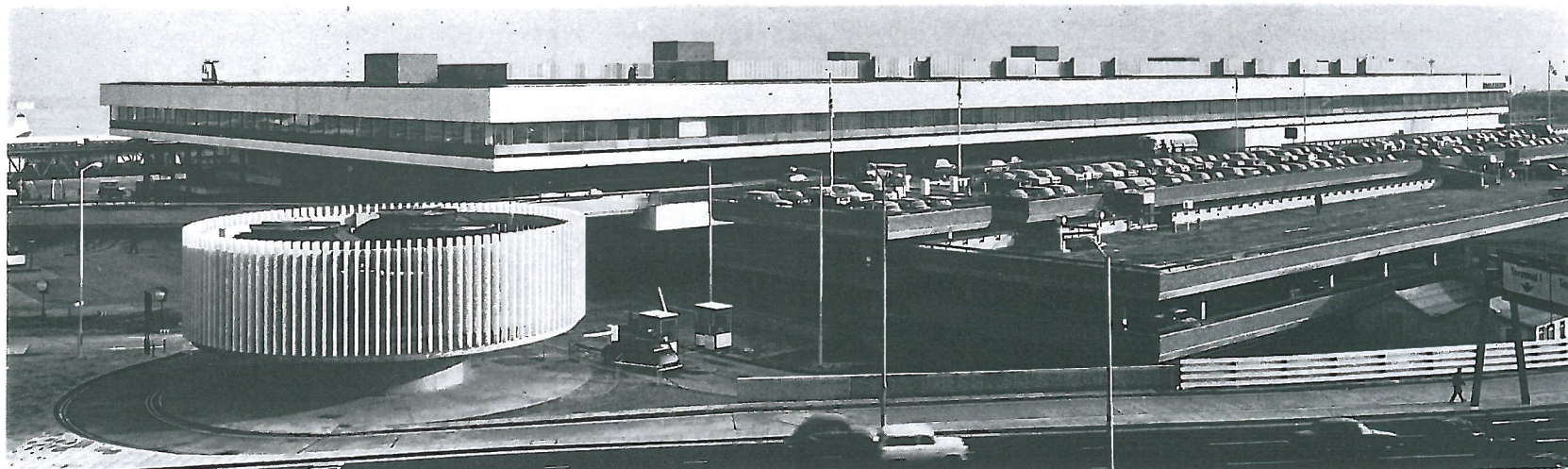


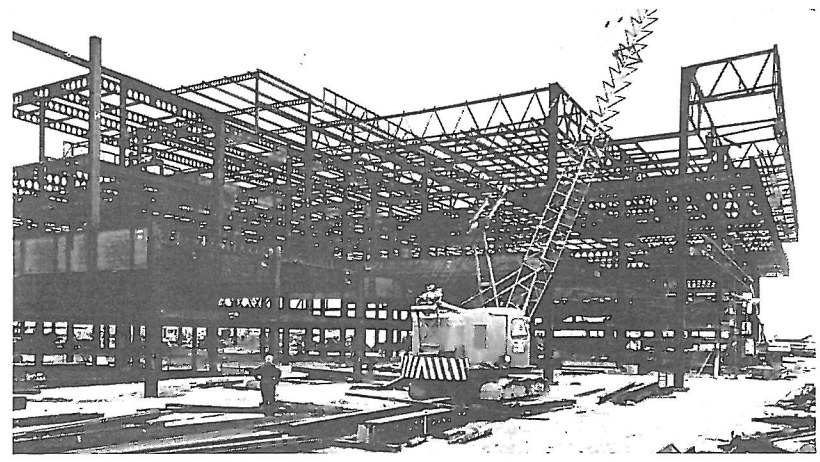


Description

This new terminal building at Heathrow Airport, built for and under the direction of the British Airports Authority, is the largest in Europe and handles all domestic and short-haul international flights by British and Irish airlines. The building is 610ft long \times 285ft \times 55ft high and is planned on a main grid 50ft \times 50ft with the central section 25ft \times 25ft. There are three main floors plus two service and maintenance floors. Sight lines from the control tower and radar clearance lines imposed a height limitation which restricted the depths of roof and floor girders. The complex includes the car and coach approach routes together with a car park for 800 vehicles. Coach traffic passes through the heart of the building by its own exclusive route. The departure floor at the upper level has catering and shopping facilities and leads directly to two piers serving 20 aircraft stands.

For speed of erection and future flexibility the structural frame throughout is uncased steelwork. Columns are free standing and isolated from finished surfaces.





Clean design of the staircase by using exposed steel.