

Footbridge, Riverside Shopping Precinct, Thetford
for Thetford Borough Council

Architects
Berry, Crane and Noble

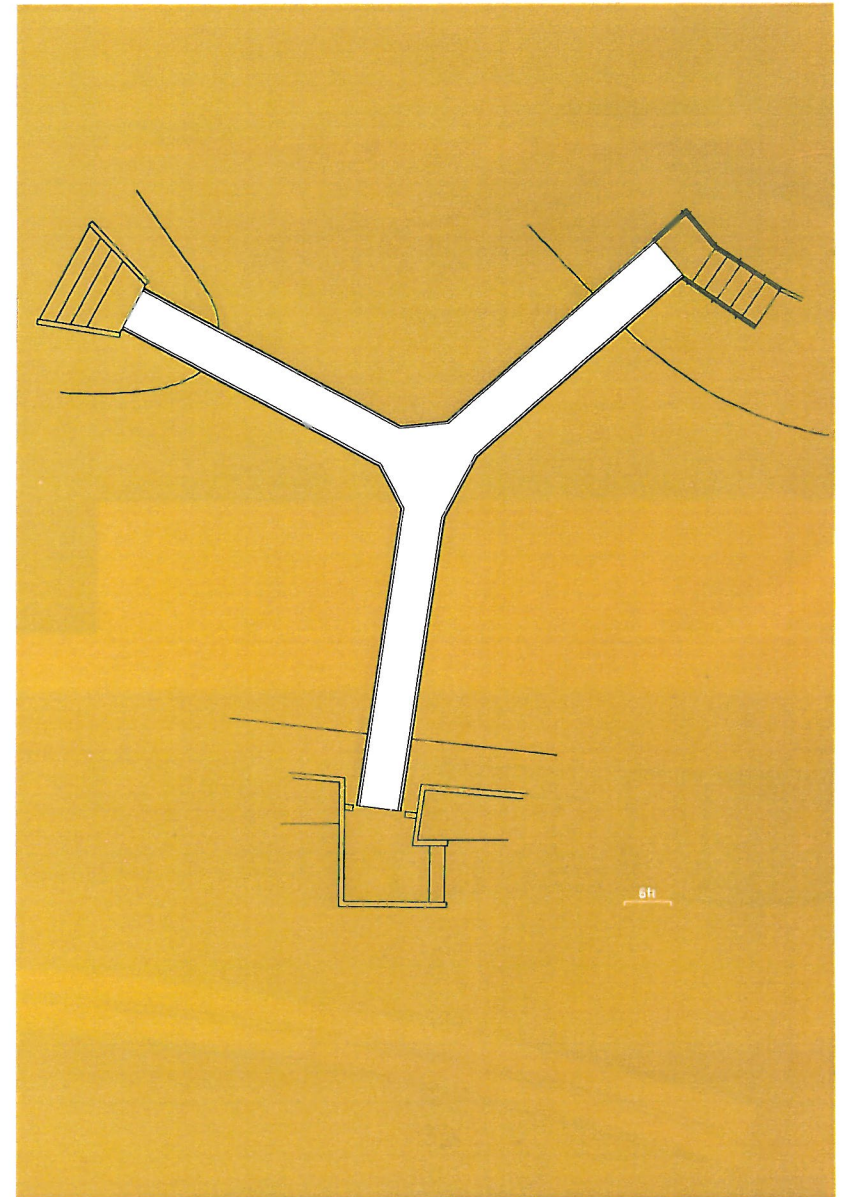
Design Office
Boulton and Paul (Steel Construction) Ltd

Steelwork Contractor
Boulton and Paul (Steel Construction) Ltd

Main Contractor
May Gurney & Co. Ltd

Judges comments

This three-armed footbridge of welded box sections represents not only a light and graceful solution of an unusual problem but has achieved a highly pleasing aesthetic result. In addition, the use of steel enabled the whole of the superstructure to be erected, welded and opened for use in the remarkably short time schedule of three weeks.



Description

The Thetford footbridge links a new shopping centre with a car park and a promontory of land, between the rivers Little Ouse and Thet, that will be developed as a municipal park. The spans are approximately 80ft and the width is 5ft 6in. The deck consists of a welded box section which was prefabricated in three arms and a centre piece. These components were welded together on the car park and floated into position on a barge. No central support was permitted by the river authority. To keep the weight down, the walkway was surfaced with calcined bauxite and epoxy resin direct on to the steel plate deck. The balustrade was prefabricated with a Rectangular Hollow Section handrail and was welded in position. Little time was allowed for completing this contract, and the architects state that "... the welded steel construction was the ideal and only method of carrying out this scheme."

